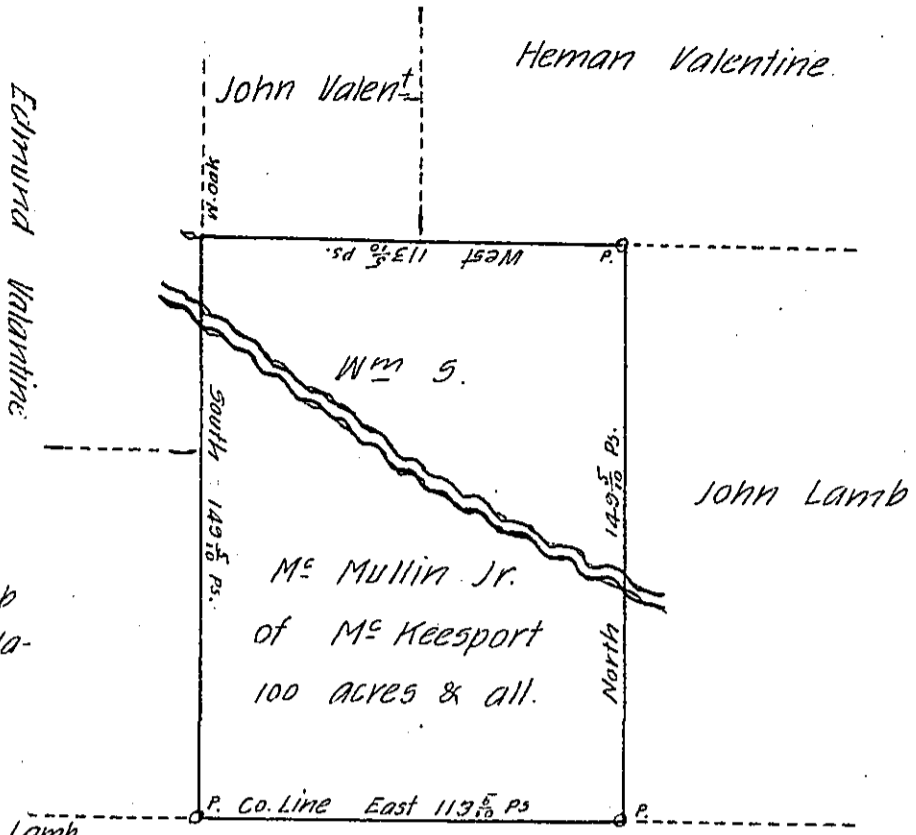


Courses and Distances Beginning  
 at the North East corner of the Tract,  
 and being the North West Corner of a  
 Tract of Land surveyed for John Lamb  
 and on the south line of Land of Ha-  
 man Valentine

- Thence. West  $113 \frac{5}{10} \text{ P.}$  to white oak
- " south  $149 \frac{5}{10} \text{ P.}$  " County Line
- " East  $113 \frac{5}{10} \text{ P.}$  " post cor John Lamb
- " North  $149 \frac{5}{10} \text{ P.}$  " Beginning = 100 acres & all.



Venango County

Draft of a Tract of Land situate in Deerfield Township  
 Warren County, surveyed for Wm. S. Mc Mullin Jr, of Mc Keesport, the twenty  
 first day of March A. D. 1853 in pursuance of a Warrant granted to  
 Wm S Mc Mullin Jr, dated ninth December A. D. 1852. Containing one  
 hundred acres of Land. (Improved) and allowance  
 Witness my hand and seal the twenty  
 first day of March A. D. 1853.

M. F. Powell D. S.  
 for Warran County

IN TESTIMONY that the above is a copy of the original remaining on file in  
 the Department of Internal Affairs of Pennsylvania, made  
 conformably to an Act of Assembly approved the 16th day of  
 February, 1833, I have hereunto set my Hand and caused  
 the Seal of said Department to be affixed at Harrisburg,  
 this ninth day of May 1906

*Laurel D. Grouse*  
 Secretary of Internal Affairs.